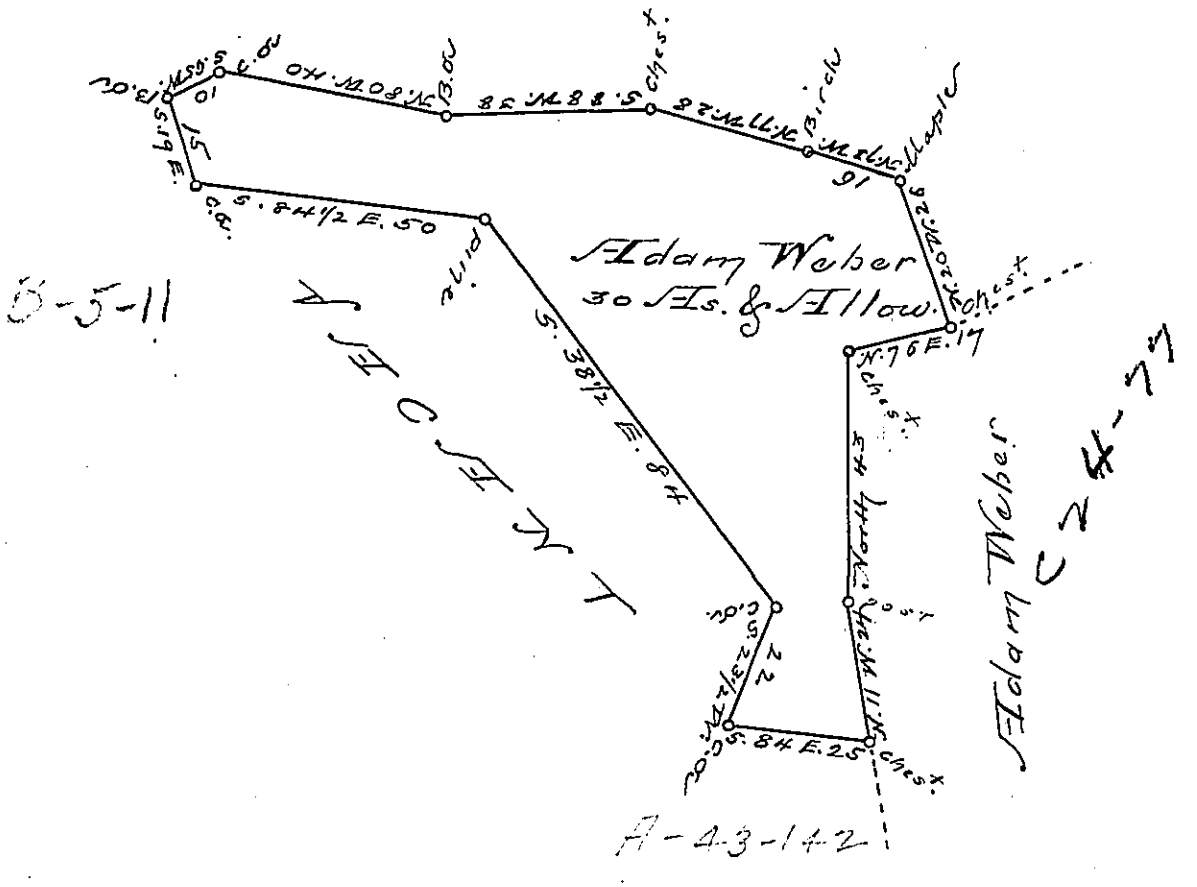


V A C U E T



Situate in Bethel Township Berks County
 containing thirty acres and the allowance
 of six per cent for roads &c.

Surveyed 9th December 1815 to Adam Weber
 in pursuance of a warrant dated the 16th
 October 1815.

To Rich^d. J. Leech Esq^r }
 Sur. Gen. Penna. } John M. Hyrman Sec.

IN TESTIMONY that the above is a copy of the original remaining on file in the
 Department of Internal Affairs of Pennsylvania, made con-
 formably to an Act of Assembly approved the 16th day of
 February, 1833, I have hereunto set my Hand and caused
 the Seal of said Department to be affixed at Harrisburg, this

— fourth — day of — February — 1896.

James W. Patton
 Secretary of Internal Affairs.